



**SHREEJI**<sup>®</sup>  
MOTORS & PUMPS



Perfection \_\_\_\_\_  
Can be made Only through  
\_\_\_\_\_ Experience

SINCE 1994

# COMPANY PROFILE

SHREEJI MOTORS CO. is one of the leading and a complied companies in the manufacturing induction motors & pumps. SHREEJI MOTOR CO. was established in the year of 1994. Our company working as per ISO 9001-2008 certified.

**INNOVATION** is to create aggressively, pursue customer satisfaction and maintain the company's ever lasting prosperity. We strive for creativity and innovation at all time. Based on the concept of customer-oriented, we provide satisfying products and service to our customer so that we can make bright future.

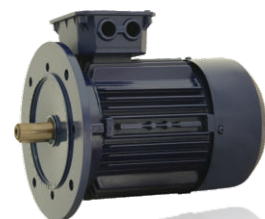
**SINCERITY** is to help each other enthusiastically and achieve the win-win goals of customers, company and individuals. we respect humanity and make a harmonious work environment. Helping each other enthusiastically means to care about our customers and colleagues so that we can have prosperous future of customer, company and individuals.

**CREDIBILITY** is to offer the society excellent products and service. In order to meet the demands of society, we continue to make efforts based on the honest principle to provide service and products of best quality and less cost so as to make contributions to the society.



## Features:

- Motors are fitted with dynamically balanced aluminum die cast squirrel cage rotors.
- Motors are free from moisture and dust particles.
- Minimum rotor losses due to use of electrolytic grade of aluminium.
- Minimum copper losses due to use of electrolytic grade of copper.
- Low noise, smooth running motor.
- Easy maintenance.
- Low payback period.



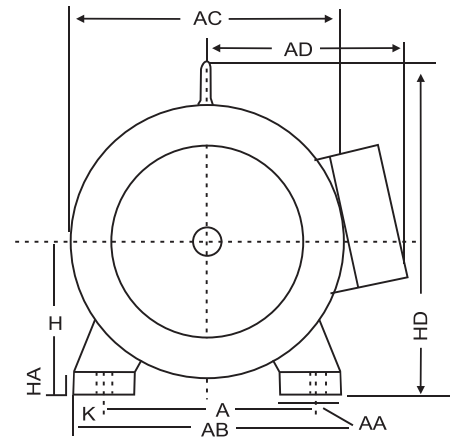
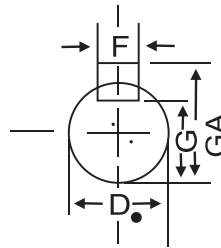
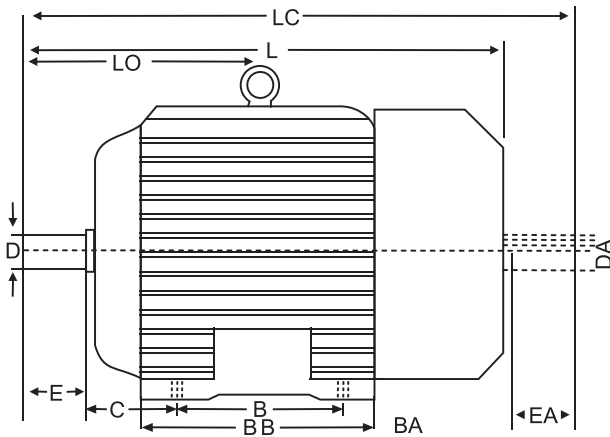
## Application:

- Pumps
- Compressors, Machine tools
- Fans and blowers
- Flour mills, rolling mills, mixers
- Textile and plastic machineries
- Printing, packaging and wood working machineries
- Agricultural, food processing machinery etc.

## Standard Specifications:

- Motor Type : AC Single/Three Phase  
Induction Motor
- Rated power : 0.37 kW to 11 kW (0.5 HP to 15 HP)
- Rated speed : 2 pole, 4 pole, 6 pole, 8 pole,
- Voltage  $\pm$  Variation : 240V ( $\pm 10$ ) & 415V ( $\pm 10$ )
- Frequency : 50Hz ( $\pm 5$ )
- Relative humidity : Up to 100
- Direction of rotation : Anticlockwise or clockwise as  
seen from the Driver end side
- Type of enclosure : TEFC (IC411)

## B3 INDUCTION MOTOR



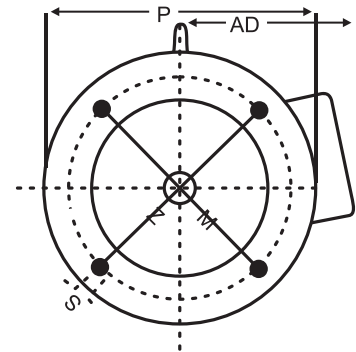
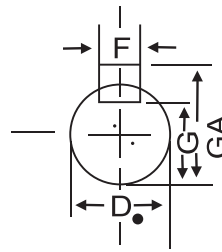
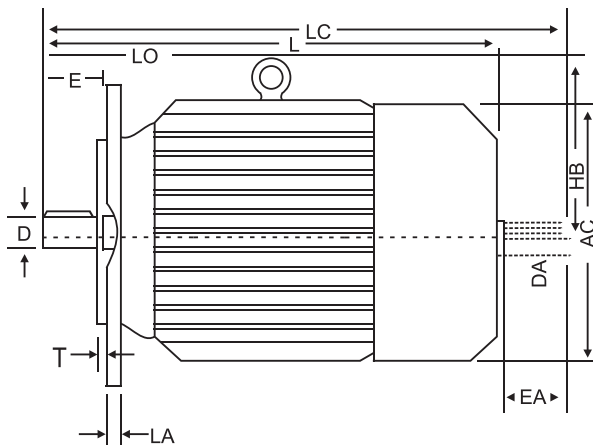
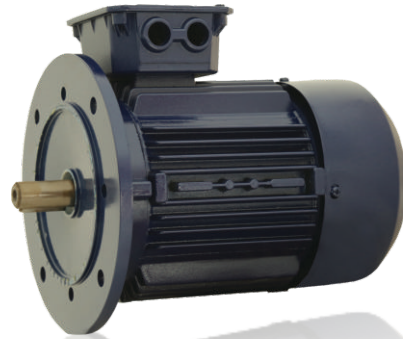
### MECHANICAL DIMENSIONS OF FOOT MOUNTED MOTOR

FRAME	A	B	C	D DA	E EA	F EA	G	H	K	LO	AA	AB	AC	BA	AD	BB	HA	HD	GA	LC	L
63	100	80	40	11	23	4	8.5	63	6	105	25	123	127	30	100	100	08	165	12.5	242	215
71S	112	61	45	14	30	5	11	71	6	105	33	140	145	31	115	92	10	140	16	250	215
71L	112	90	45	14	30	5	11	71	6	120	34	140	145	31	115	110	10	143	16	275	240
80	125	100	50	19	40	6	15.5	80	6	140	38	157	165	40	125	124	10	160	21.5	326	281
90S	140	100	56	24	50	8	20	90	10	153	37	170	181	45	135	130	12	182	27	360	305
90L	140	125	56	24	50	8	20	90	10	168	37	174	181	50	135	150	12	182	27	385	330
100S	160	112	65	28	60	8	24	100	12	170	41	195	210	54	146	141	13	250	31	395	330
100L	160	140	65	28	60	8	24	100	12	194	45	200	220	54	150	170	14	250	31	435	370
112M	190	140	70	28	60	8	24	112	12	198	47	225	230	35	170	173	14	275	31	460	395
132S	216	140	89	28	80	10	33	132	12	238	58	265	273	40	192	181	15	325	41	537	452
132M	216	178	89	38	80	10	33	132	12	265	58	265	273	50	192	230	15	325	41	595	505
160M	254	210	108	42	110	12	37	160	12	323	72	320	320	90	290	310	25	385	45	-	695
160L	254	254	108	42	110	12	37	160	12	345	80	320	360	95	310	300	28	415	45	-	740

• (ALL SIZE IN MM)



## B5 INDUCTION MOTOR



### MECHANICAL DIMENSIONS OF FLANGE MOUNTED MOTOR

FRAME	M	N	P	S	T	LO	LA	AD	AC	HB	D DA	E EA	F	G	GA	L	LC
63	115	95	140	10	3.0	107	9	-	117	-	11	23	04	8.5	12.5	213	-
71	130	110	160	10	3.5	123	9	110	140	-	14	30	05	11	16	245	275
80	165	130	200	12	3.5	140	10	120	160	-	19	40	06	15.5	21.5	277	326
90L	165	130	200	12	3.5	165	10	130	177	-	24	50	08	20	27	327	385
100L	215	180	250	15	4.0	191	11	147	201	155	28	60	08	24	31	363	435
112M	215	180	250	15	4.0	200	11	162	224	164	28	60	08	24	31	394	460
132S	265	230	300	15	4.0	251	12	207	260	185	38	80	10	33	41	455	537
132M	265	230	300	15	4.0	288	12	207	260	185	38	80	10	33	41	513	595
160M	300	250	350	19	5.0	323	20	290	330	225	42	110	12	37	45	581	-
160L	300	250	350	19	5.0	345	20	290	330	225	42	110	12	37	45	625	-

• (ALL SIZE IN MM)

## Features :

- Highly efficient & low maintenance.
- Continuous duty rated at maximum force.
- Totally dust proof air cooled design can operate in dusty environment.
- Noise free performance.
- Maintenance free sealed imported pre lubricated heavy ball bearings.
- Vibration force adjustable from zero to maximum by adjusting position of unbalance weight provided on both sides of the motor shaft application.
- Body made from high grade SG iron casting or Aluminum & CI material.

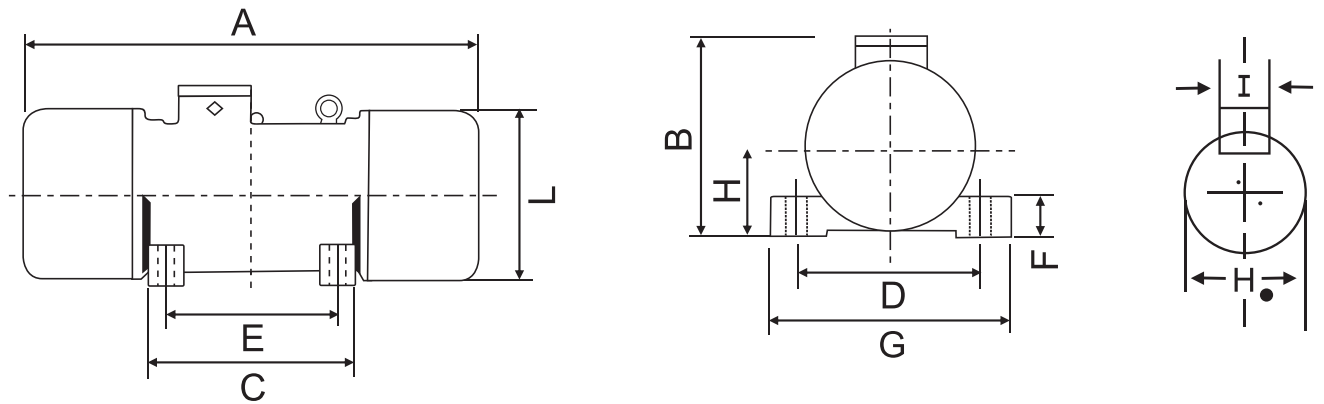


## Application:

- Vibrating table for paver block & concrete blocks
- Hoppers
- Silos
- Vibrating conveyors
- Vibrating feeders
- Silica sand processing
- Stone crushing mining, screening, micronizing plants
- Brick, tiles, ceramic production etc.

## Standard Specifications:

- Motor rating 0.5 HP to 5 HP
- Motor up to 3 HP available in both Single phase and Three phase and 5 HP is only Three phase
- Standard single phase motor is designed for rate voltage 230V ( $\pm 10$ )
- Standard three phase motor is designed for rate voltage 415V ( $\pm 10$ )
- Frequency 50Hz ( $\pm 5$ )



## MECHANICAL DIMENSIONS OF FOOT VIBRATE MOTOR

kW	HP	BODY TYPE	A	B	C	D	E	F	G	H	I
0.37	0.5-Alu.	Aluminum	280	190	115	125	70	20	160	19	-
0.75	1-Alu.	Aluminum	340	215	115	170	70	25	205	19	-
0.75	1-Cast.	Cast Iron	280	175	125	165	100	25	200	19	-
1.5	2	Steel Grade CI	415	240	185	195	140	45	230	28	8
2.2	3	Cast Iron	455	275	155	210	100	52	245	28	8

• (ALL SIZE IN MM)

## Features :

- High quality cast iron body.
- Dynamically balanced rotor.
- Forged brass impeller for long life & non magnetic pumpset.
- Stainless steel shaft is anti rusting and has longer life.
- Dual coated copper winding wires give high motor efficiency and saving power consumption.
- All wearing parts within the pumps are easily accessible and replaceable which facilitates ease of maintenance, thereby extending the life of the pump.
- No need of foot valve and priming pumpset every time for quicker operating.

## Applications :

- For lifting water to overhead storage tank
- Used in gardening, farm house, building
- Hotels, hospital, residential bungalows
- General industries

## Standard Specification :

- Pump rating 0.5 HP to 2 HP
- Pipe size 15x15mm to 40x40mm
- Pump up to 1 HP are available in single phase.
- 1 HP and 2 HP are available in three phase also.
- Standard single phase motor is designed for rate voltage 230V ( $\pm 10$ ).
- Standard three phase motor is designed for rate voltage 415V ( $\pm 10$ ).
- Frequency 50Hz( $\pm 5$ ).



MODEL NO.	kW	HP	RPM	SUCXDEL in mm	HEAD IN METER										
					6	8	10	12	15	20	22	25	27	30	
SDM-11	0.37	0.5	2800	12x12	DISCHARGE IN L PM	24	21	19	16	14	11	-	-	-	-
SDM-10	0.55	0.75	2800	25x25		27	25	22	20	18	15	13	11	-	-
SDM-2	0.37	0.5	1440	25x25		52	50	48	43	37	30	23	-	-	-
SDM-3	0.75	1	1440	25x25		61	60	58	55	53	46	45	42	39	36

MODEL NO.	kW	HP	RPM	STAGE	SUCXDEL in mm	HEAD IN METER					
						LPM	6	15	25	35	55
SDM-13	1.5	2	1440	2	40x40	5100	4500	3600	3000	1500	1200



## Open well Submersible Monoblock Pump

- SS/CI motor body flanged design ensure robustness and reliability.
- Better efficiency due to copper rotor which enables high performance.
- Heavy duty carbon thrust bearing takes care of thrust load.
- Superior polymer coated winding wire to with stand wide voltage fluctuation.
- All rotating components are dynamically balanced to ensure long bearing life and vibrating free smooth operation.



## Application

- Irrigation of Open Well, Pond, Canals, River,
- Water Supply to High Rise Building, Community
- Fountains, Drip Irrigation, Nurseries
- Pressure Boosting

## Standard Specifications:

- Pump rating 0.5 HP to 7.5 HP
- Pump up to 2 HP are available in Single phase
- 1 HP to 7.5 HP are available in Three phase
- Standard single phase motor is designed for rate voltage 230V ( $\pm 10$ )
- Standard three phase motor is designed for rate voltage 415V ( $\pm 10$ )
- Frequency 50Hz ( $\pm 5$ )



## V-7 S.S. BODY HORIZONTAL OPENWELL PUMPS

SR. NO.	kW	HP	SUCXDEL in mm	HEAD IN METER											
				10	12	14	16	18	20	22	24	25	27	30	
1	0.37	0.5	25x25	DISCHARGE IN LPM	120	105	90	65	40	-	-	-	-	-	-
2	0.75	1	25x25		202	198	192	185	165	140	110	90	60	40	-
3	1.2	1.5	40x40		310	300	296	290	280	272	160	230	170	51	25
4	1.5	2	65x50		460	450	445	430	400	360	340	300	230	180	-

## V-9 S.S. BODY HORIZONTAL OPENWELL PUMPS

SR. NO.	kW	HP	SUCXDEL in mm	HEAD IN METER												
				0	12	16	20	22	23	24	26	28	30	32	35	
1	2.2	3	6.5x6.5	DISCHARGE IN LPM	740	620	530	450	390	350	-	-	-	-	-	-
2	3.7	5	6.5x6.5		1250	1120	970	850	760	750	680	580	350	-	-	-
3	5.5	7.5	6.5x6.5		1330	1300	1230	1150	1100	1090	1020	975	930	840	790	650

SR. NO.	kW	HP	STAGE	SUCXDEL in mm	HEAD IN METER										
					0	10	15	20	25	30	35	40	45	50	
1	1.5	2	2	40x40	LPM	200	185	175	165	145	130	115	90	60	0

## V4 Submersible Pumpset

- Better efficiency and consistent performance.
- Superior polymer coated winding wire to withstand voltage fluctuation.
- All rotating components are dynamically balanced to ensure long bearing life and vibration free smooth operation.
- Impeller and diffusers are high quality 30% glass filled engineering polymer.
- Polymer parts are well protected by metallic wear ring.
- Heavy duty specially designed carbon trust bearing.
- Built in NRV with minimum friction to prevent back flow.
- Ease in assembly and disassembly for servicing.



## Standard Specifications:

- Pump rating 0.5 HP to 3 HP
- All pump available in Single phase and Three phase
- Standard single phase motor is designed for rate voltage 230V ( $\pm 10$ )
- Standard three phase motor is designed for rate voltage 415V ( $\pm 10$ )
- Frequency 50Hz ( $\pm 5$ )

## Application

- Domestic water supply
- Housing complex, bungalow
- Fountains, lawn, garden
- Dairies, cattle and poultry farm
- Solar pumping station

## PERFORMANCE CHART

Delivery Outlet 32MM					Performance Data								50 Hz			
		kW	Amp.	H.P	Q	l/min l/sec.	0	6	12	18	24	30	36	42	48	54
220/240V	380/415V						0.0	0.1	0.2	0.3	0.4	0.6	0.6	0.7	0.8	0.9
0.5-2-10	-	0.37	5	0.5	Head (m)	60	57	54	50	46	35	35	29	21	13	
0.75-1-15	-	0.55	7	0.75		90	86	81	76	70	53	53	43	32	20	
1-1-18	1-1-18	0.75	8/5	1		108	103	98	91	84	64	64	52	39	24	
1-1-20	1-1-20	0.75	8/5	1		120	115	108	101	93	71	71	58	43	27	
1.5-1-25	1.5-1-25	1.1	10/6	1.5		150	143	135	126	116	90	90	73	54	33	
2-1-30	2-1-30	1.5	12/7	2		180	172	162	152	139	107	107	87	65	40	

Delivery Outlet 32MM					Performance Data								50 Hz			
		kW	Amp.	H.P	Q	l/min l/sec.	0	9	18	27	36	45	53	60	69	78
220/240V	380/415V						0.00	0.75	0.30	0.45	0.60	0.75	0.88	1.00	1.15	1.30
0.5-2-7	-	0.37	5	0.5	Head (m)	42	40	38	35	32	28	24	20	13	6	
0.5-2-8	-	0.37	5	0.5		48	46	43	40	36	32	27	22	15	7	
0.75-2-10	-	0.55	6	0.75		60	57	54	50	46	40	34	28	19	9	
0.75-2-12	-	0.55	6	0.75		72	69	65	60	55	48	41	33	23	11	
1-2-12	1-2-12	0.75	8/5	1		72	69	65	60	55	48	41	33	23	11	
1-2-12	1-2-15	0.75	8/5	1		90	87	82	76	69	60	51	42	29	14	
1.5-2-20	1.5-2-20	1.1	10/6	1.5		120	115	109	102	92	80	68	56	38	18	
2-2-25	2-2-25	1.5	12/7	2		150	144	136	126	115	100	85	70	48	23	

Delivery Outlet 32MM				Performance Data										50 Hz		
		kW	Amp.	H.P	Q	l/min l/sec.	0	6	18	30	42	54	66	78	90	102
220/240V	380/415V						0.0	0.10	0.30	0.50	0.70	<b>0.90</b>	1.10	1.30	1.50	1.70
0.75-4-8	-	0.55	6	0.75	Head (m)	48	47	44	42	38	<b>34</b>	28	21	13	4	
1-4-10	1-4-10	0.75	8/5	1		60	59	56	52	48	<b>42</b>	35	27	16	5	
1.5-4-15	1.5-4-15	1.1	10/6	1.5		90	88	83	79	72	<b>63</b>	53	40	25	8	
2-4-20	2-4-20	1.5	12/7	2		120	117	111	105	96	<b>84</b>	70	53	33	11	
3-2-30	3-2-30	2.0	14/8	3		180	176	167	157	144	<b>127</b>	106	80	49	16	

Delivery Outlet 40MM				Performance Data										50 Hz		
		kW	Amp.	H.P	Q	l/min l/sec.	0	15	27	42	51	66	84	105	126	144
220/240V	380/415V						0.0	0.25	0.45	0.70	0.85	<b>1.10</b>	1.40	1.75	2.10	2.40
0.75-4-6	-	0.55	6	0.75	Head (m)	36	35	33	31	30	<b>28</b>	24	20	15	10	
1-5-8	1-5-8	0.75	8/5	1		48	46	44	42	40	<b>37</b>	32	16	20	13	
1.5-4-12	1.5-4-12	1.1	10/6	1.5		72	69	66	62	60	<b>55</b>	49	40	29	20	
2-5-15	2-5-15	1.5	12/7	2		90	86	83	78	75	<b>69</b>	61	50	37	24	
3-4-25	3-4-25	2.2	14/8	3		150	144	138	130	125	<b>115</b>	101	83	61	41	

Delivery Outlet 40MM				Performance Data										50 Hz		
		kW	Amp.	H.P	Q	l/min l/sec.	0	18	36	54	72	90	108	126	144	162
220/240V	380/415V						0.0	0.30	0.60	0.90	1.20	<b>1.50</b>	1.80	2.10	2.40	2.70
1.5-5-10	1.5-5-10	1.1	10/6	1.5	Head (m)	60	59	57	53	49	<b>44</b>	39	33	26	18	
2-7-12	2-7-12	1.5	12/7	2		72	70	68	64	59	<b>53</b>	47	39	31	22	
3-5-20	3-5-20	2.2	14/8	3		120	117	113	106	98	<b>88</b>	78	65	52	37	

Delivery Outlet 57MM				Performance Data										50 Hz		
		kW	Amp.	H.P	Q	l/min l/sec.	0	24	48	74	98	123	137	150	165	180
220/240V	380/415V						0.00	0.40	0.80	1.23	1.64	<b>2.28</b>	2.28	2.50	2.75	3.00
1.5-7-8	1.5-7-8	1.1	10/6	1.5	Head (m)	48	46	44	40	35	<b>29</b>	25	21	16	10	
2-7-10	2-7-10	1.5	12/7	2		60	58	55	50	44	<b>36</b>	31	26	20	13	
3-7-15	3-7-15	2.2	14/8	3		90	87	82	74	65	<b>54</b>	47	39	29	19	

Delivery Outlet 57MM				Performance Data										50 Hz		
		kW	Amp.	H.P	Q	l/min l/sec.	0	51	72	93	116	138	159	180	203	225
220/240V	380/415V						0.00	0.85	0.85	1.55	1.93	<b>2.30</b>	2.65	3.00	3.38	3.75
2-10-8	2-10-8	1.5	12/7	2	Head (m)	48	44	44	40	36	<b>32</b>	28	23	17	10	
3-10-12	3-10-12	2.2	14/8	3		72	66	66	59	55	<b>49</b>	42	35	26	15	

Delivery Outlet 57MM				Performance Data										50 Hz		
		kW	Amp.	H.P	Q	l/min l/sec.	0	75	90	105	120	150	195	247	315	360
220/240V	380/415V						0.00	1.00	1.00	1.75	2.50	2.50	<b>3.25</b>	4.12	5.25	6.00
3-12-10	3-12-10	2.2	14/8	3	Head (m)	50	47	47	43	42	39	<b>34</b>	27	17	8	



**SHREEJI MOTORS CO.**

**Moonnagar Chowk,**

**Opp. Balaji Marble, Morbi - 363641 (Guj.) INDIA.**

**Mo.:** 98252 11298, 98254 23071

**E-mail :** [shreejimotor862@gmail.com](mailto:shreejimotor862@gmail.com)